

THE ANTHONY

STATESMAN SERIES
3436 SQ FT



Elevation A



Elevation A
with Media/Bedroom 6



Elevation B



Elevation B
with Media/Bedroom 6



Elevation A (with stone)



Elevation A (with stone)
with Media/Bedroom 6



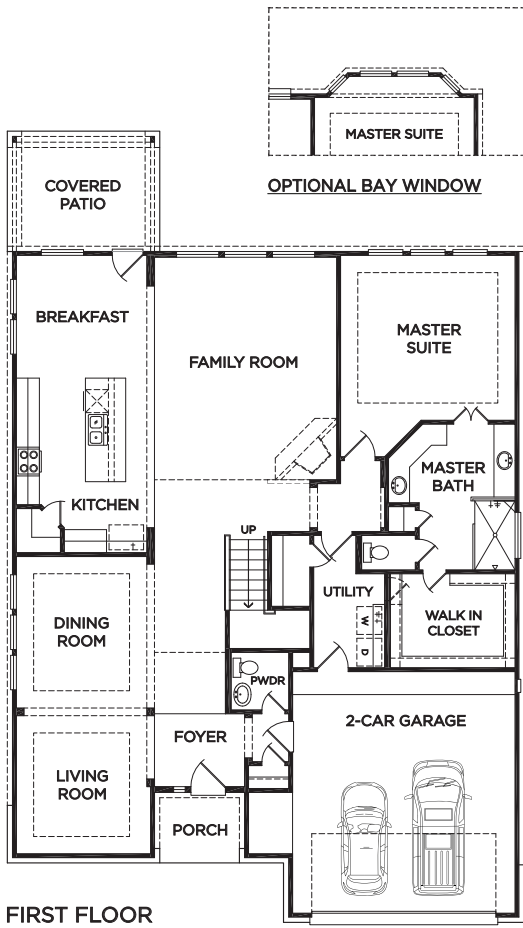
Elevation B (with stone)



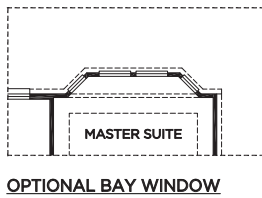
Elevation B (with stone)
with Media/Bedroom 6

For more information, visit www.mckinleyhomeshouston.com

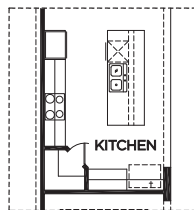
©2024 McKinley Homes US, LLC. Plans, features, pricing and availability are subject to change without prior notice or obligation and may vary by elevation. Information including square footage is approximate and subject to change without prior notice or obligations. Images are an artist's conceptions and not a guarantee of final specifications. Please see our sales professional for details and additional information.



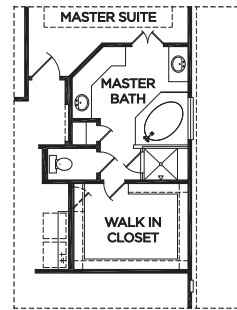
FIRST FLOOR



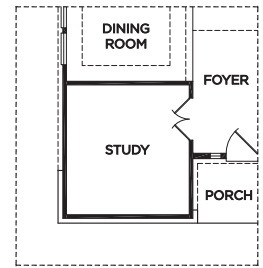
OPTIONAL BAY WINDOW



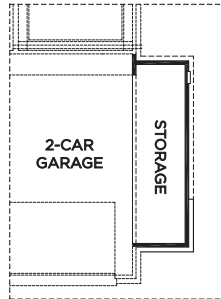
OPTIONAL KITCHEN WITH DOUBLE OVEN



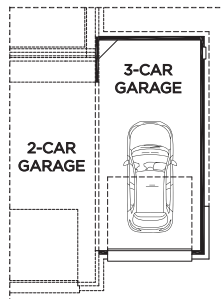
OPTIONAL SEPARATE MASTER BATH TUB & SHOWER



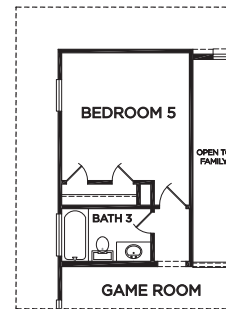
OPTIONAL STUDY



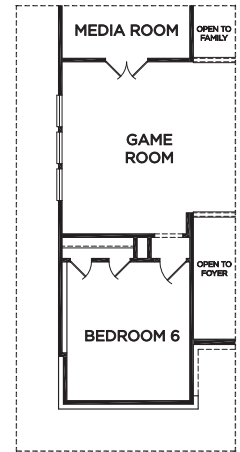
OPTIONAL 5 FT. EXTENDED GARAGE



OPTIONAL 3-CAR GARAGE



OPTIONAL BEDROOM 5



OPTIONAL BEDROOM 6

THE ANTHONY

Approximate Square Footage: 3436

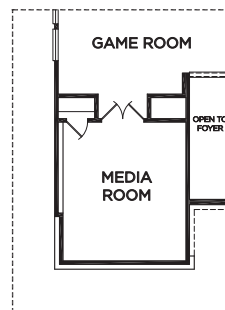
4 Bedrooms / 2.5 Baths

Optional Bedroom 5

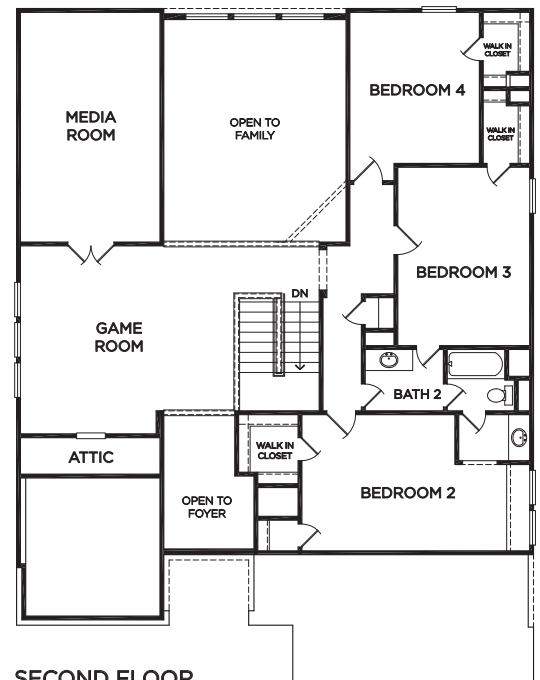
Optional Bedroom 6

Optional Media Room 2

Optional Study



OPTIONAL MEDIA ROOM 2



SECOND FLOOR

For more information, visit www.mckinleyhouston.com

©2024 McKinley Homes US, LLC. Plans, features, pricing and availability are subject to change without prior notice or obligation and may vary by elevation. Information including square footage is approximate and subject to change without prior notice or obligations. Images are an artist's conceptions and not a guarantee of final specifications. Please see our sales professional for details and additional information.