

THE DOUGLASS

STATESMAN SERIES
3234 SQ FT



Elevation A



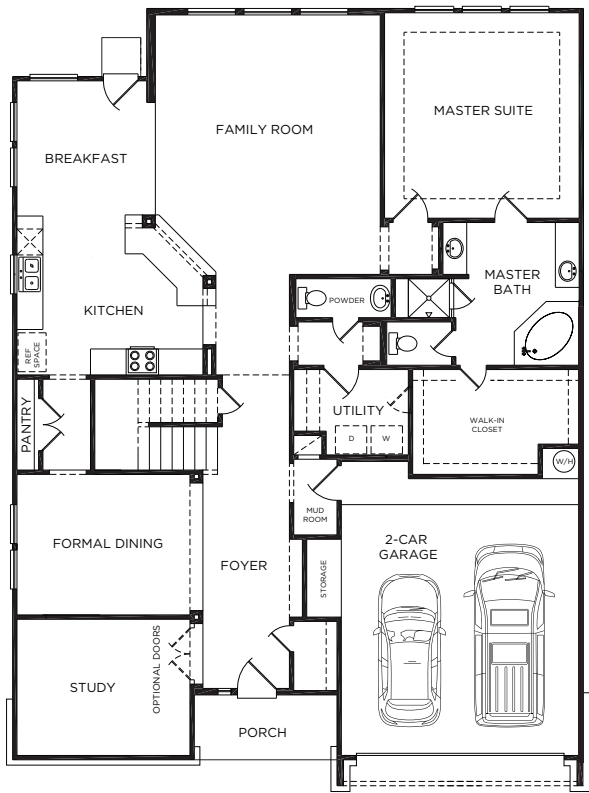
Elevation A (with stone)



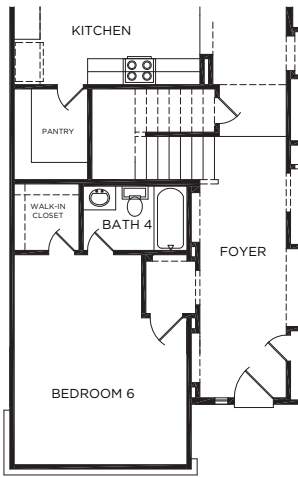
Elevation B (with stone)

For more information, visit www.mckinleyhomeshouston.com

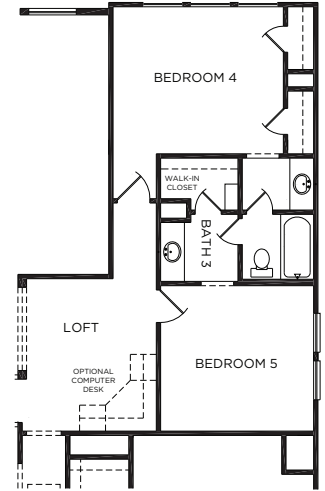
©2024 McKinley Homes US, LLC. Plans, features, pricing and availability are subject to change without prior notice or obligation and may vary by elevation. Information including square footage is approximate and subject to change without prior notice or obligations. Images are an artist's conceptions and not a guarantee of final specifications. Please see our sales professional for details and additional information.



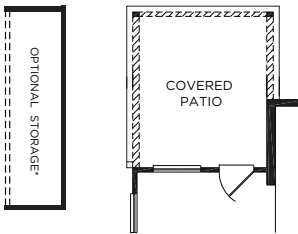
FIRST FLOOR



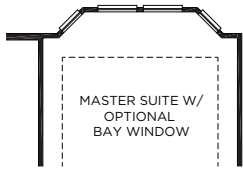
OPTIONAL BEDROOM 6/BATH 4
FIRST FLOOR



OPTIONAL LOFT/BEDROOM 5
SECOND FLOOR



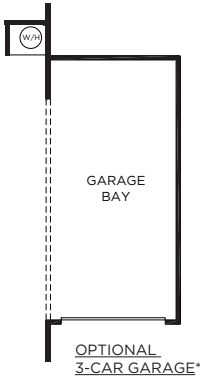
OPTIONAL COVERED PATIO



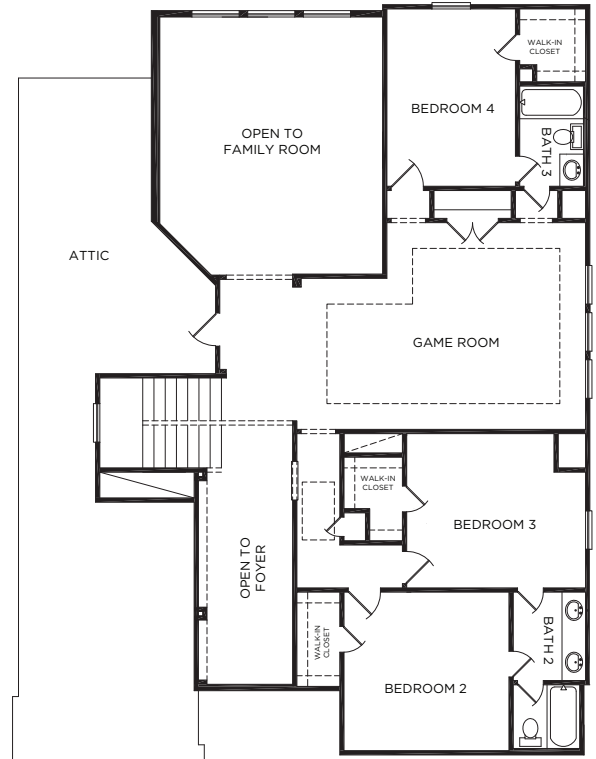
OPTIONAL MASTER SUITE



OPTIONAL FIREPLACE



OPTIONAL 3-CAR GARAGE*



SECOND FLOOR

THE DOUGLASS

Approximate Square Footage: 3281

4 Bedrooms / 3.5 Baths

Optional Covered Rear Patio

Optional Bedroom 5 with Loft

Optional Bedroom 6 with Bath 4

For more information, visit www.mckinleyhomeshouston.com

©2024 McKinley Homes US, LLC. Plans, features, pricing and availability are subject to change without prior notice or obligation and may vary by elevation. Information including square footage is approximate and subject to change without prior notice or obligations. Images are an artist's conceptions and not a guarantee of final specifications. Please see our sales professional for details and additional information.